

Walsh Family Trust, LLC

*1,440 Acres of Retired CRP Cropland and
Pastureland*

Kimball County, Nebraska

LOCATION: The Walsh Family Trust, LLC is located in Nebraska next to the Wyoming/Nebraska state line approximately twelve miles north of Bushnell, Nebraska

FARM/RANCH: There are 1,440 total Deeded Acres. 1,036 Acres were enrolled in the Conservation Reserve Program (CRP) for the past 15 years. The CRP contract has expired and the owners have elected not to renew this contract. The remaining 404 Acres is native pastureland. A newer submersible well provides livestock water.

LEGAL DESCRIPTION:

TOWNSHIP 16 NORTH, RANGE 58 WEST, KIMBALL CO., NE

Section 18: All

TOWNSHIP 16 NORTH, RANGE 59 WEST, KIMBALL CO., NE

Section 13: E2

Section 24: N2, SW

KIMBALL COUNTY REAL ESTATE TAXES: \$8,834.54

MINERAL RIGHTS: Sellers are retaining 50% of any available mineral rights.

LISTING PRICE: \$770,000.00

Premier Properties
1942 East D
Torrington, Wyoming

Listing Agent: Bob Van Newkirk 307-532-1596

www.wyo-realestate.com

Directions: From Albin, Wyoming, 1/2 mile east to WY Hwy #215, South to Road 223, then east to Rd 1 W, then North 1.5 miles to improvements on east side of road.

Improvements: Two round grain storage bins approximately 3,000 bu, two round grain storage bins, approximately 4,500 bu. Old barn In poor condition. Submersible well is located near the bins and barn.

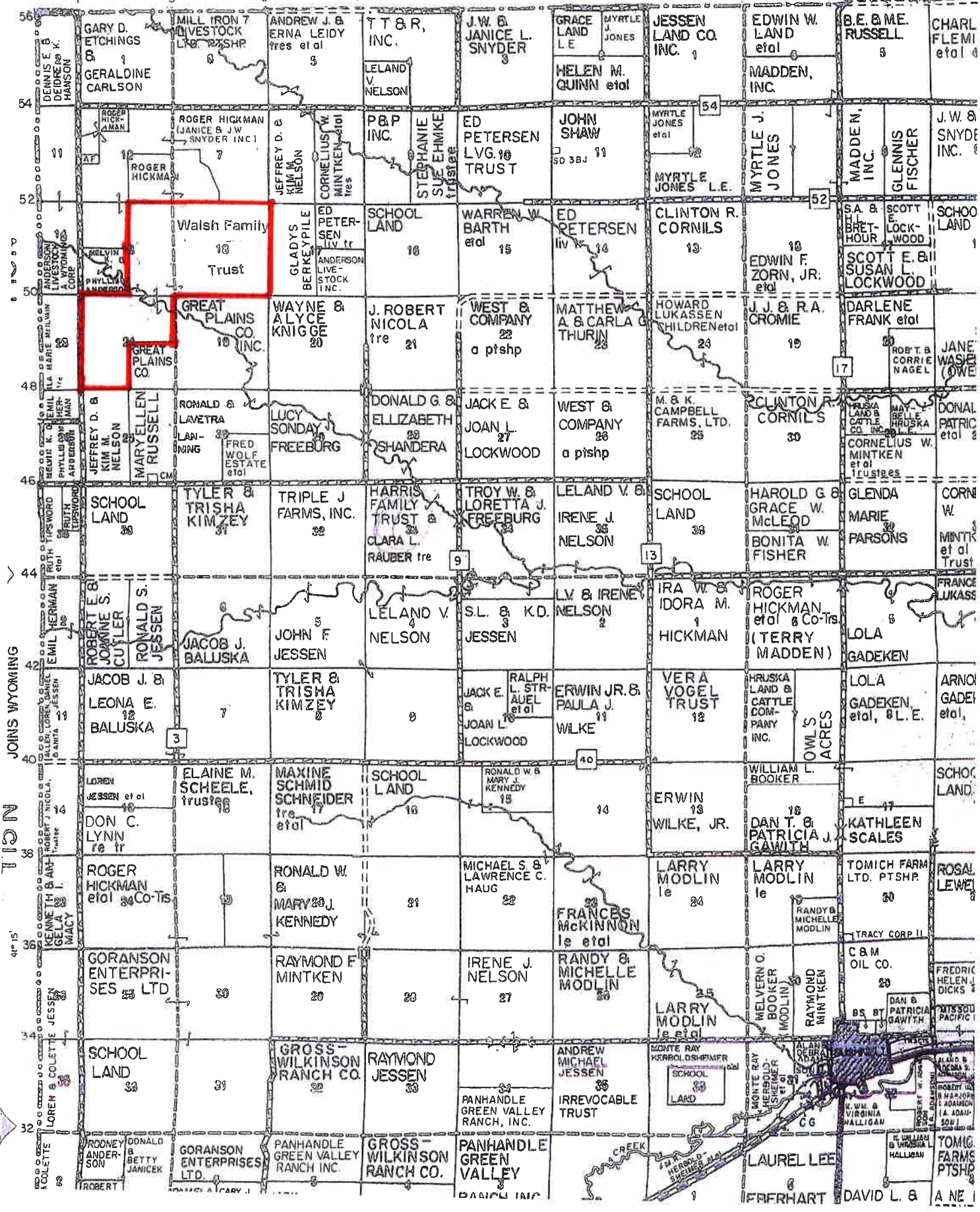
Windmill in pasture. Condition is not known. Exterior Fences are in poor condition.

R59W

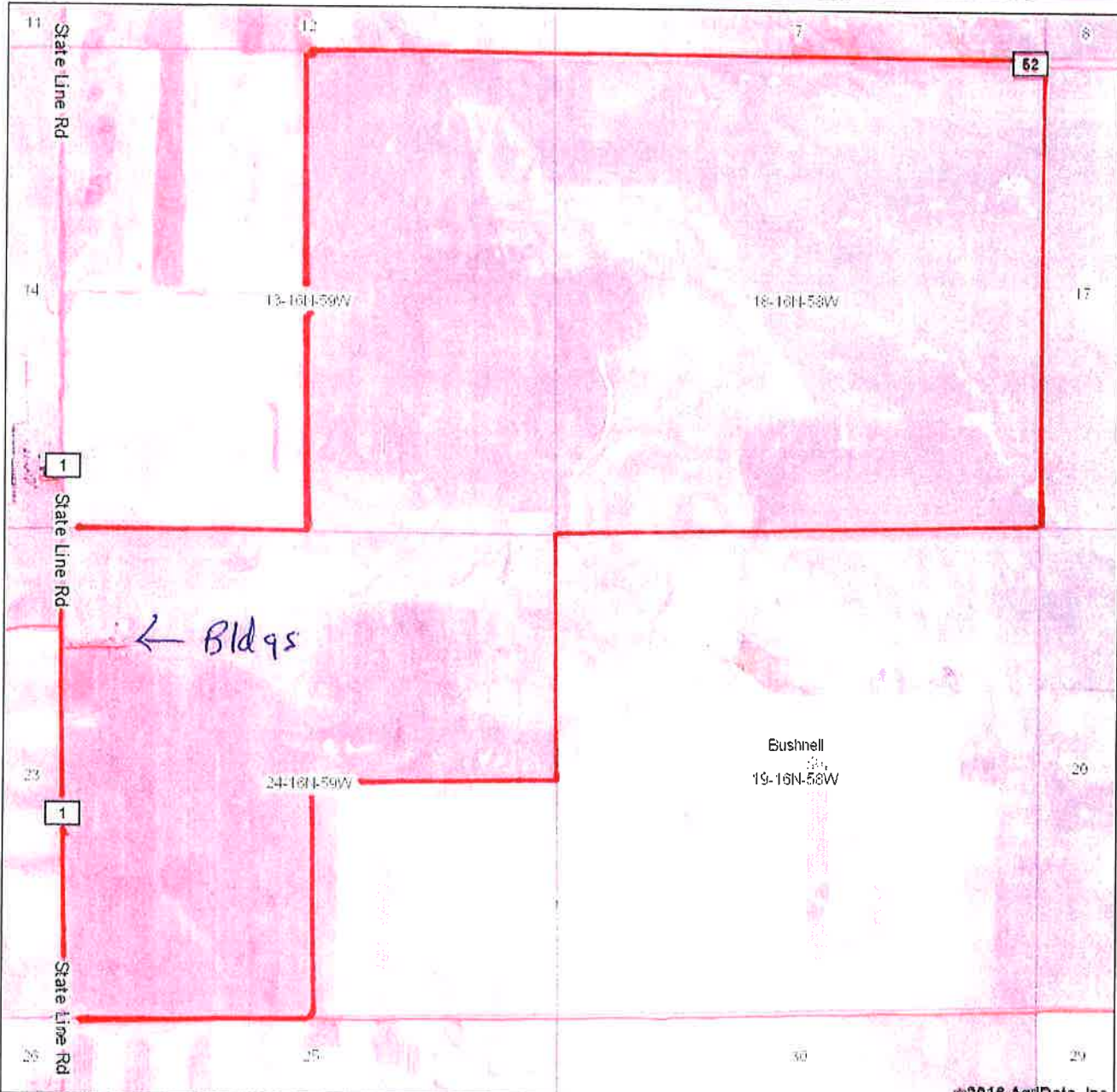
R58W

JOINS BANNER CO.

104° 00'



Aerial Map



©2016 AgriData, Inc.

Premier Properties

1962 East D Street
Lorington, Wyoming
888-532-1117
www.wyorealestate.com

Maps Provided By



© AgriData, Inc. 2016 www.AgrIDataInc.com

19-16N-58W
Kimball County
Nebraska

map center: 41° 20' 58.25, 104° 1' 31.11

scale: 19621



1/26/2016

